



**Baltic**  
**Workboats**  
shipyard



# PATROL 101

## 11 M FAST PATROL BOAT

### TECHNICAL DATA:

#### MAIN DIMENSIONS

|                          |            |
|--------------------------|------------|
| LENGTH LOA:              | 10.80 M    |
| BREADTH:                 | 3.56 M     |
| DRAUGHT:                 | 0.47 M     |
| DISPLACEMENT:            | 5.60 T     |
| POWER:                   | 280-450 KW |
| SPEED:                   | 30-45 KN   |
| RANGE (ESTIMATED):       | 300 NM     |
| NUMBER OF<br>COMPLEMENT: | 6 PERSONS  |

#### AMBIENT CONDITIONS

|           |            |
|-----------|------------|
| AIR:      | -5° / +35° |
| SEAWATER: | +5° / +32° |

**MATERIAL OF STRUCTURE:** MARINE ALUMINIUM

**USERS:** ESTONIAN, LATVIAN AND  
LITHUANIAN COAST GUARDS

#### TANK CAPACITIES

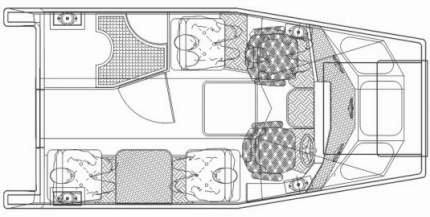
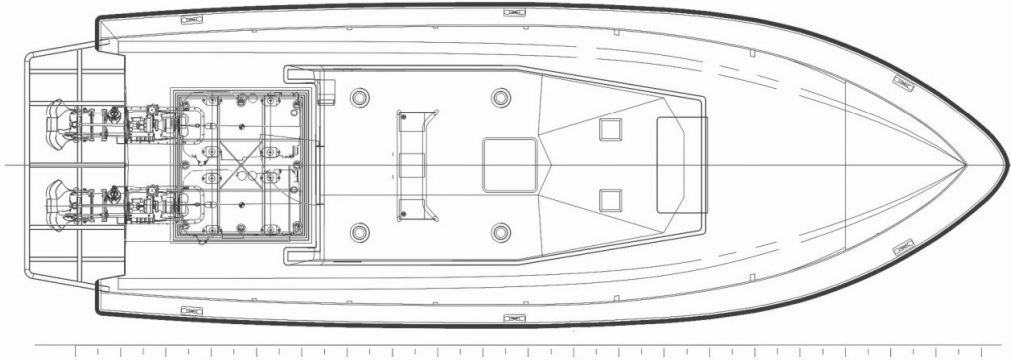
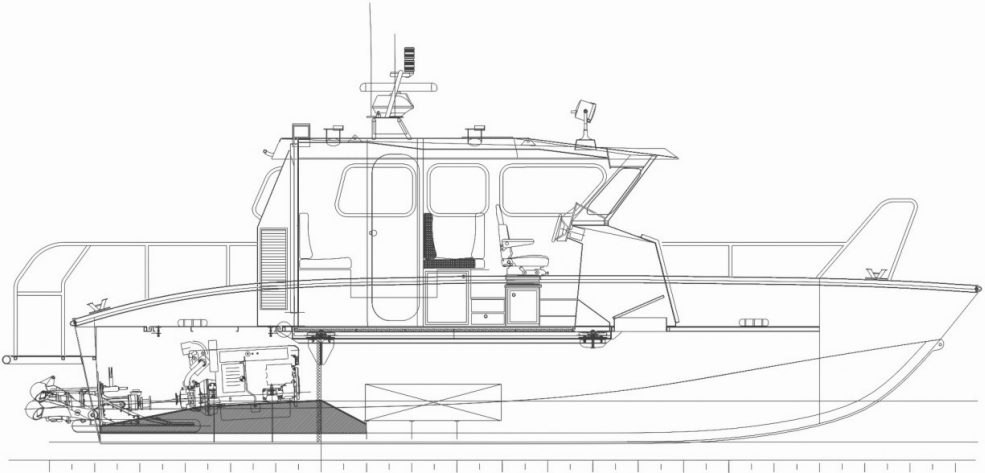
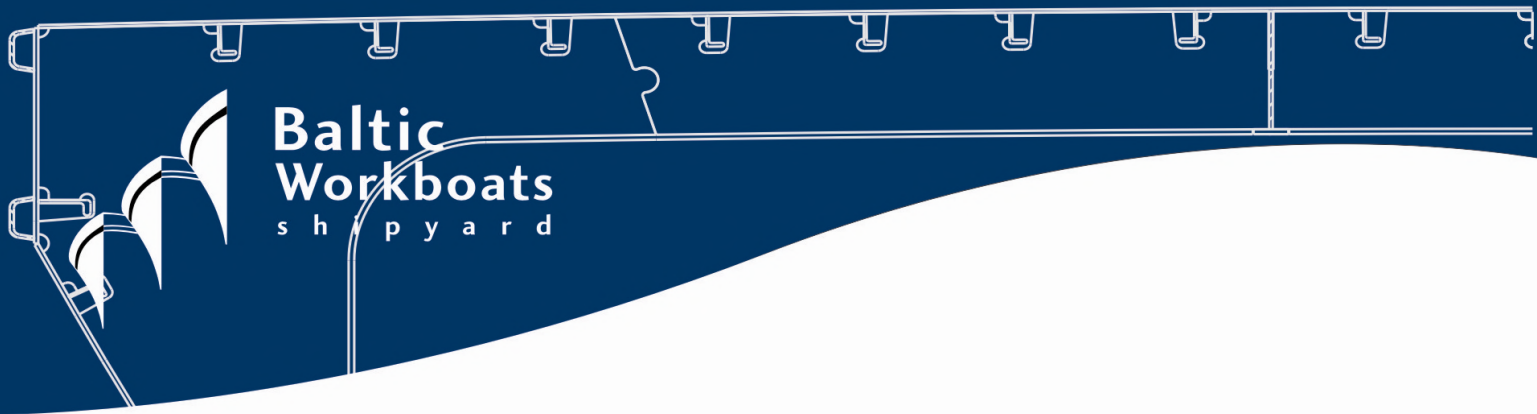
|        |           |
|--------|-----------|
| FUEL:  | 600-900 L |
| WATER: | - 100 L   |
| WASTE: | - 100 L   |

#### PROPULSION CONCEPT

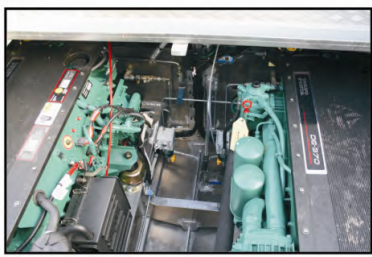
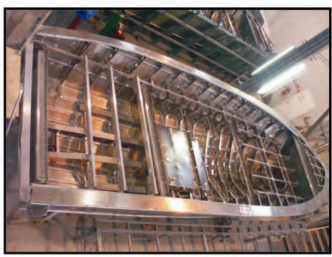
|              |                                     |
|--------------|-------------------------------------|
| MAIN ENGINE: | 2 X VOLVO PENTA D6<br>OR EQUIVALENT |
| GEARBOXES:   | TYPE ZF OR<br>EQUIVALENT            |
| PROPULSION:  | 2 X ROLLS-ROYCE<br>WATERJETS        |



**BALTIC WORKBOATS AS**



**PATROL 101**  
11M FAST PATROL BOAT



**BALTIC WORKBOATS AS**

NASVA HARBOUR  
NASVA, KAARMA V.,  
SAARE MK 93872,  
ESTONIA

PHONE:+372 45 21140  
FAX:+372 45 21145  
E/MAIL:INFO@BWB.EE  
WWW.BALTICWORKBOATS.EE